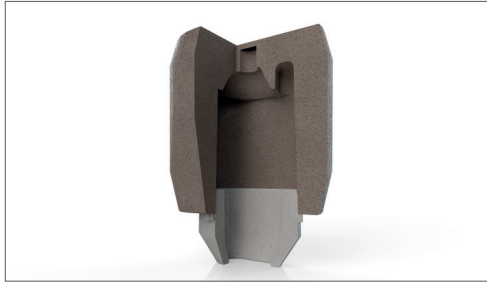
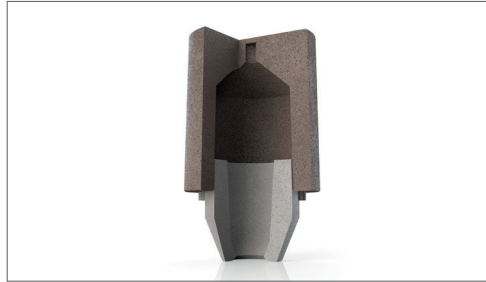


## INNOVATIVE FEEDER TECHNOLOGY FOR THE AMERICAS

**Tele-Feeder**  
CD-Shape



**Tele-Feeder**  
EK-Shape



**Clean Pour for Iron**  
CPI-Shape



Made in North America

### Tele-Feeder

SKU#	Description	PC/Pallet
40006059	CB 31-21 Tele 40 15 26	2160
40006094	CB 31-21 Tele 80 18 34	1440
40006050	CB 21-21 Tele 90 18 34	1280
40006057	CB 31-21 Tele 100 18 35	924
40007362	CB 31-21 Tele 100 25 40	924
40013135	CB 31-21 Tele 160 18 35	924
40013522	CB 31-21 Tele 160 25 40	924
40006071	CB 43-21 Tele 195 22 38	576
40006046	CB 21-21 Tele 220 25 40	400
40006047	CB 21-21 Tele 290 30 52	288
40006112	CB 21-21 Tele 290 40 70	288
40006085	CB 21-21 Tele 300 30 52	288
40006128	CB 21-21 Tele 300 40 70	288
40014327	CB 21-21 Tele 500 30 52	224
40006049	CB 21-21 Tele 500 40 62	224
40006093	CB 21-21 Tele 500 60 80	224
4000XXXX	CB 21-21 Tele 500 70 98	224
40014049	CB 21-21 Tele 700 30 52	280
40006074	CB 21-21 Tele 700 40 70	280
40006199	CB 111-21 Tele 710 45-20	144
40007359	CB 21-21 Tele 850 40 62	160
40006076	CB 21-21 Tele 850 60 80	160
40013041	CB 21-21 Tele 850 70 98	160
40006170	CB 21-21 Tele 960 40 70	72
40014113	CB 21-21 Tele 1100 60 80	48

### Inserts

SKU#	Description	PC/Pallet
40006102	CB 31 EK 40 70 SZP	2592
40007226	CB 31 EK 50 80 SZP	2080
40011854	CB 21 EK 50 100 SZP	1760
40006098	CB 31 EK 60 90 SZP	1452
40006926	CB 43 EK 70 100 SZP	960
40007214	CB 21 EK 80 110 SZP	720
40006099	CB 21 EK 100 110 SZP	432
40006124	CB 21 EK 100 130 SZP	288
40007224	CB 21 EK 120 110 SZP	288
40006114	CB 21K EK 100 170 SZP	216
40007229	CB 111 CD ov 950 SZP	288
40011802	CB 21 CD 1100 SZP	72
40014105	CB 21 CD 1380 SZP	72

### CPI

SKU#	Description	PC/Pallet
40006766	CB 111-FF CP 74 80 D50x 22-10ppi	1672
40006767	CB 111-FF CP 81 90 D60x22-10ppi	1408
40006768	CB 111-FF CP 94 100 D70x22-10ppi	920

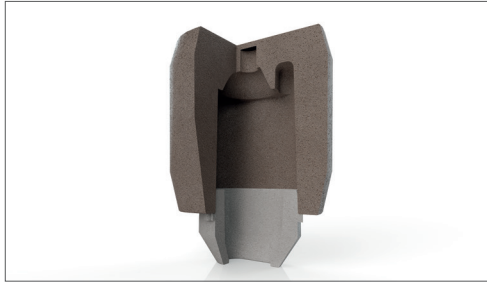


#### CONTACT OUR TEAM

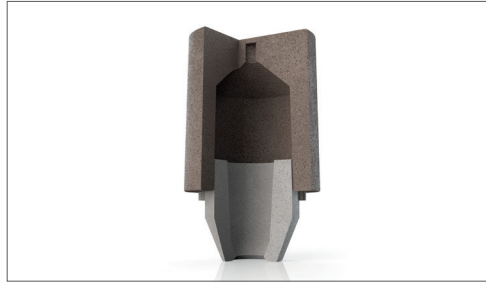
630 Oakmont Lane | Westmont, IL 60559  
 (800) 323-6863  
 Sales.USA@HA-Group.com  
 HA-International.com

## INNOVATIVE FEEDER TECHNOLOGY FOR THE AMERICAS

**Tele-Feeder**  
CD-Shape



**Tele-Feeder**  
EK-Shape



German Made Available in North America

### Tele-Feeder

SKU#	Description	PC/Pallet
40006052	CB 22-21 Tele 10 10 24	4972
40006053	CB 22-21 Tele 12 15 24	2640
40006054	CB 22-21 Tele 24 15 24	2160
40006060	CB 31-21 Tele 50 15 26	1728
40006061	CB 31-21 Tele 80 17 28	1440
40006294	CB 31-21 Tele 120 25 40	576
40006068	CB 43-21 Tele 125 32-14	768
40006089	CB 21-21 Tele 175 17 28	288
40006070	CB 43-21 Tele 190 30 46	540
40006072	CB 43-21 Tele 210 30-20	432
40006081	CB 43-21 Tele 320 30-20	320
40006048	CB 21-21 Tele 330 30 52	288
40006169	CB 21-21 Tele 820 40 70	96
40006930	CB 21-21 Tele 1200 60 80	128
40014631	CB 21-21 Tele 1200 60 80	128
40012803	CB 21-21 Tele 1200 70 98	128
40006168	CB 111-21 Tele 2000 45-20	40
40014406	CB 111-21 Tele 2000 70 98	40
40014563	CB 111-21 Tele 3600 65 100	24
40014928	CB 111-21 Tele 5300 165-65	40

### Inserts

SKU#	Description	PC/Pallet
40011857	CB 22 CD 25 SZP	6780
40007222	CB 22 CD 27 SZP	3840
40006051	CB 22 CD 37 SZP	2160
40006065	CB 43 CD ov 127 SZP	1024
40013117	CB 31 EK 40 95 SZP	2376
40007231	CB 31 EK 60 120 SZP	1188
40007220	CB 43 CD ov 280 SZP	576
40007216	CB 43 CD ov 360 SZP	432
40007218	CB 21K EK 100 75 W	672
40011848	CB 21K CD 1007	144
40006088	CB 21K EK 120 200 W	128
40013913	CB 111 CD 1800 SZP	40
40007234	CB 111 CD 2100 SZP	40
40014562	CB 111 CD 4100 SZP	24
40014930	CB 111 CD ov 5900 SZP	54



#### CONTACT OUR TEAM

630 Oakmont Lane | Westmont, IL 60559  
 (800) 323-6863  
 Sales.USA@HA-Group.com  
 HA-International.com

Please allow up to 10 business days for lead time (order placement to shipment from our plant). Standard minimum order quantity is 1 pallet. Imported feeders at times may require extended lead times and may vary based on availability and other factors.